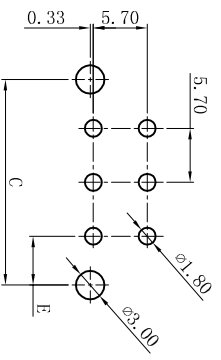
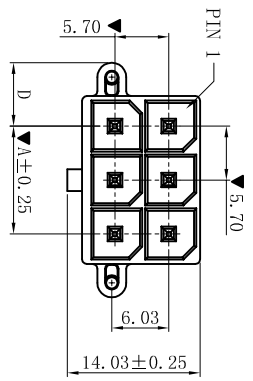
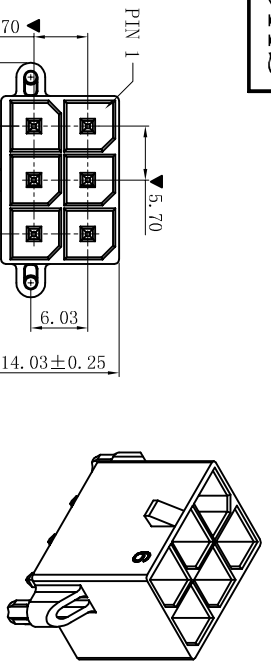
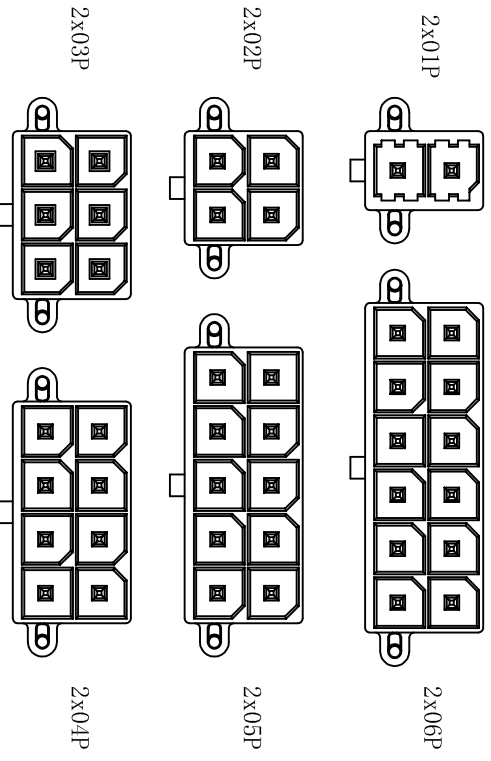
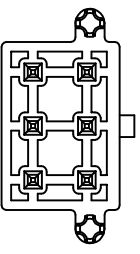
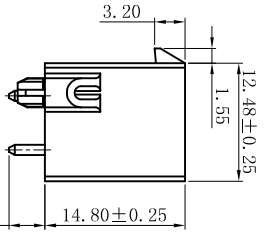
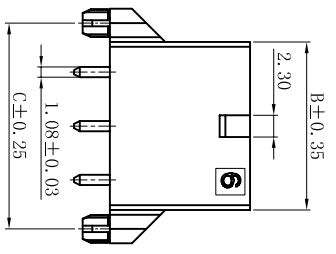


ROHS



P. C. B LAYOUT
GENERAL TOLERANCE: ±0.05mm

- SPECIFICATIONS
- Voltage rating: 600V AC, DC
 - Current rating: 23A, AC, DC
 - Withstanding Voltage: 2200V AC/minute
 - Insulation resistance: 1000MΩ min
 - Temperature range: -40° C ~ +105° C
 - Contact resistance: 20mΩ max
- WAFER
- Part No.: W5701V-2xNP
 - Poles : 02-12P
 - Housing Material: LCP UL94V-0 Black
 - Pin Material: High Contactivity Copper Alloy
 - Contact Area Plating: Tin-Plated
 - The Dimension Marked “▲” Must Be Recorded



CIRCUIT SIZE LAYOUT

Poles	Dimensions (mm)				
	A	B	C	D	E
2x01	N/A	8.35	12.34	7.7	6.17
2x02	5.70	12.05	16.04	6.7	5.17
2x03	11.40	17.75	21.74	6.7	5.17
2x04	17.10	23.45	27.44	6.7	5.17
2x05	22.80	29.15	33.14	6.7	5.17
2x06	28.50	34.85	28.84	6.7	5.17

XYDZ® 东莞市祥运连接器有限公司
DongGuan XiangYun Connectors CO., Ltd

一般公差
GENERAL TOLERANCE:
0±0.30
.0±0.25
.00±0.20
.000±0.05
ANGLE: ±1°

投影法 Projection	第一角投影	单位 Unit	MM
比例/Scale	1:1	大小/Size	A4
日期/DATE	2022-05-10	页码/SHEET	1/1
版本/Rev	A		

品名 (PART NAME)	Molex5.70mm 180° Wafer Connector Series	料号 (PART NO)	W5701V-2xNP	状态码	C
-------------------	--------------------------------------------	-----------------	-------------	-----	---

绘图/DR	陈雄军	审核/APPRO	胡进
日期/DATE	2022-05-10	承认/APPRO	

新版本	说明	日期	承认
版本	说明	日期	承认

REV.	DESCRIPTION	DATE	APPRO.
------	-------------	------	--------