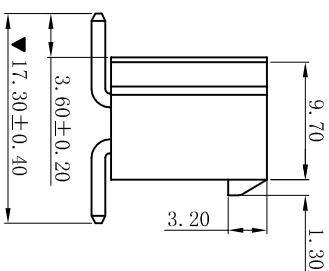
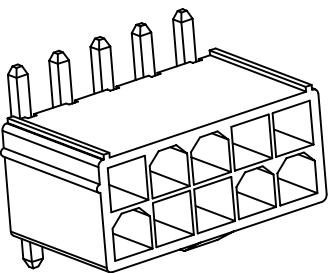
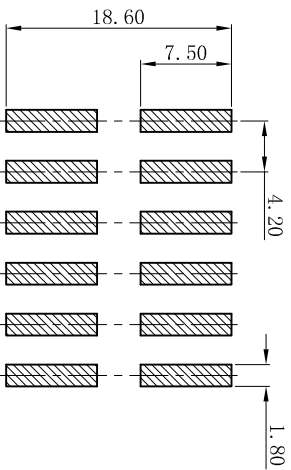
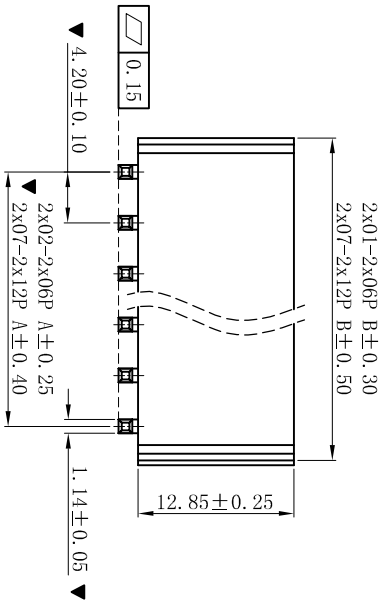
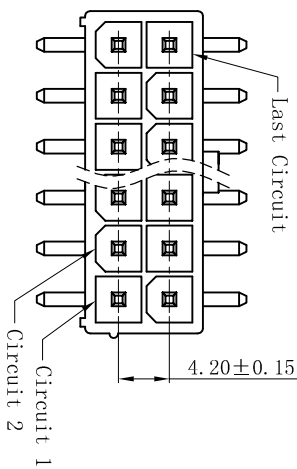


RoHS

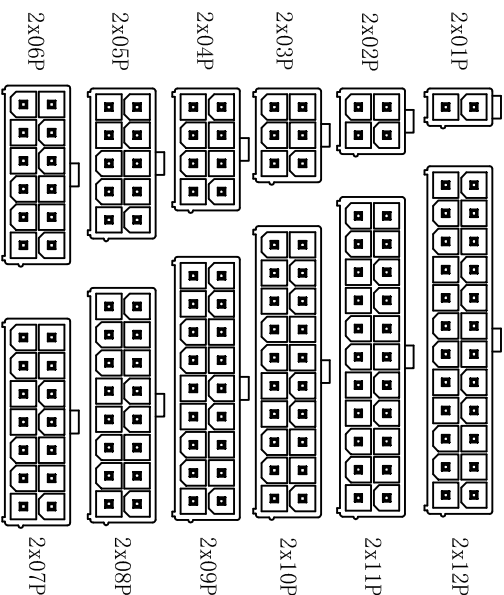


W4202SV-2xNP-XX
 INSTULATOR / COLOR
 None:PA66-V2 Natural
 BK:PA66-V2 Black
 V0:PA66-V0 Natural
 V0BK:PA66-V0 Black
 LP:LCF-V0 Natural
 LPBK:LCF-V0 Black
 9T:PA9T-V0 Natural
 9TJBK:PA9T-V0 Black
 46:PA46-V0 Natural
 46BK:PA46-V0 Black
 6T:PA6T-V0 Natural
 6TJBK:PA6T-V0 Black

CONTACT FINISH
 None:Fin-Plated
 SW:Fin Plating Fog
 G:Gold-Flash
 G3:3u" Gold
 G10:10u" Gold
 G15:15u" Gold
 G30:30u" Gold

SPECIFICATIONS

- Voltage rating: 600V AC, DC
 - Current rating: 7A, AC, DC
 - Withstanding Voltage: 1500V AC/minute
 - Insulation resistance:1000MΩ min
 - Temperature range: -25° C~+85° C
 - Contact resistance: 20mΩ max
- WAFER
- Part No.: W4202SV-2xNP-XX
 - Poles : 02-24P
 - Housing Material: PA66 UL94V-2 or UL94V-0
 - Pin Material: Brass
 - Contact Area Plating: Tin-Plated or Gold-Flash
 - Mates With: H4201 dual row receptacle
 - PIN L=1.14x16.50
- The Dimension Marked "▼" Must Be Recorded



Poles	Dimensions(mm)	
	A	B
2x01	--	5.60
2x02	4.20	9.80
2x03	8.40	14.00
2x04	12.60	18.20
2x05	16.80	22.40
2x06	21.00	26.60
2x07	25.20	30.80
2x08	29.40	35.00
2x09	33.60	39.20
2x10	37.80	43.40
2x11	42.00	47.60
2x12	46.20	51.80

CIRCUIT SIZE LAYOUT

XYDZ® 东莞市祥运连接器有限公司
 Dongguan XiangYun Connectors CO., Ltd

一般公差
 GENERAL TOLERANCE:
 0±0.30
 -0±0.25
 .000±0.05
 ANGLE: ±1°

投影法
 Projection
 单位 Unit
 MM

品名
 (PART NAME)
 Molex 4.20mm SWT 180°
 Wafer Connector Series

料号
 (PART NO)
 W4202SV-2xNP-XX

版本号
 REV.
 1

更新画面
 2019-07-03
 陈雄军

修订版本
 2015-11-04
 陈雄军

变更图宽格式内容
 2013-12-27
 陈雄军

新版本
 2011-05-24
 陈雄军

说明
 DESCRIPTION
 APPRO.
 承认

日期
 DATE
 2019-07-03

审核/CHKC
 陈雄军

核准/APPRO
 胡进

日期/DATE
 2019-07-03

页码/SHEET
 1/1

版本/Rev
 D

状态码
 C