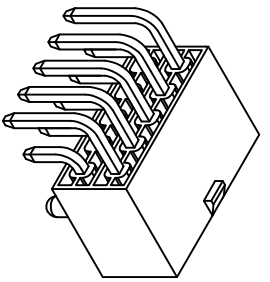
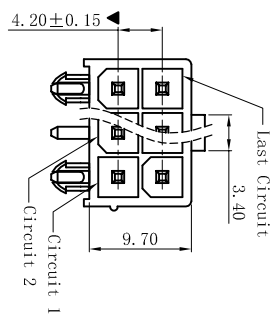
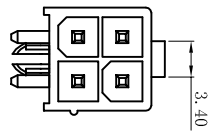
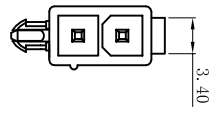


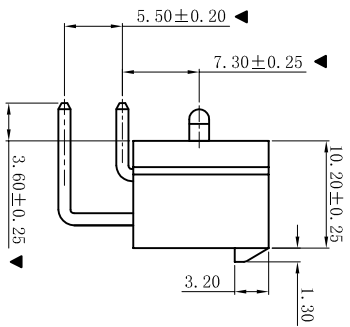
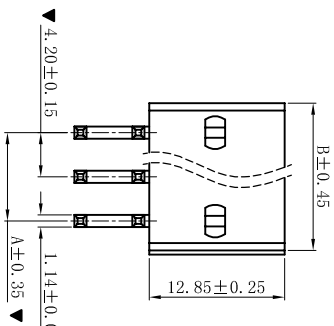
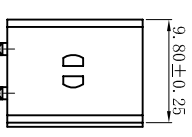
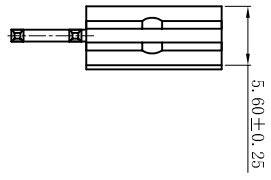
ROHS



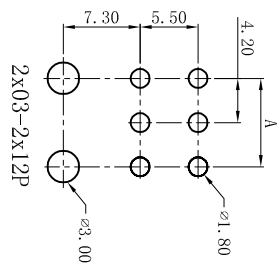
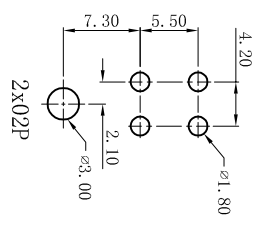
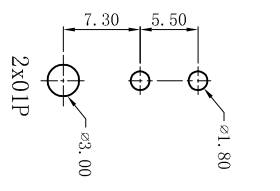
2x01P

2x02P

2x03-2x08P



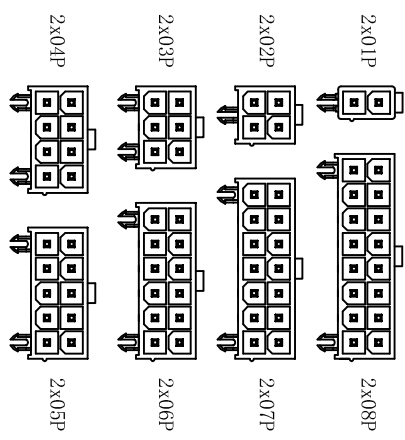
W4202RD-2xNP-XX



PCB LAYOUT: Component Side
Recommended PCB Thickness 1.78MMX

HSG Material / COLOR
None: PA66-V2 Natural
BK: PA66-V2 Black
VO: PA66-V0 Natural
V0BK: PA66-V0 Black
LP: LCP-V0 Natural
LPBK: LCP-V0 Black
9T: PA9T-V0 Natural
9TBK: PA9T-V0 Black
46: PA46-V0 Natural
46BK: PA46-V0 Black

Contact Finish
None: Tin-Plated
SW: Matte Tin-Plated
G: Gold-Flash
G3: 30" Gold
G10: 10u" Gold
G15: 15u" Gold
G30: 30u" Gold



PART NO.	Dimensions (mm)	
	A	B
2x01	--	5.60
2x02	4.20	9.80
2x03	8.40	14.00
2x04	12.60	18.20
2x05	16.80	22.40
2x06	21.00	26.60
2x07	25.20	30.80
2x08	29.40	35.00

- SPECIFICATIONS
- Voltage rating: 600V AC, DC
 - Current rating: 7A, AC, DC
 - Withstanding Voltage: 1500V AC/minute
 - Insulation resistance: 1000MΩ min
 - Temperature range: -25° C +85° C
 - Contact resistance: 20mΩ max
- WAFER
- Part No.: W4202RD-2xNP-XX
 - Poles: 02-16P
 - Housing Material: PA66 UL94V-2 or UL94V-0
 - Pin Material: Brass
 - Contact Area Plating: Tin-Plated or Gold-Flash
 - Mates With: H4201 dual row receptacle
 - The Dimension Marked "▼" Must Be Recorded

D	更新图面	2019-07-03	陈雄军	更新图面
C	修订版本	2015-11-04	陈雄军	变更图宽格式内容
B	新版本	2013-12-27	陈雄军	新版本
A	说明	2011-05-24	陈雄军	说明
H	版次	REV.	1	1

一般公差	0±0.30
GENERAL TOLERANCE:	.00±0.25
	.000±0.05
ANGLE:	±1°
绘图/DR	陈雄军
审核/CHECK	陈雄军
核准/APPRO	胡进
日期/DATE	2019-07-03

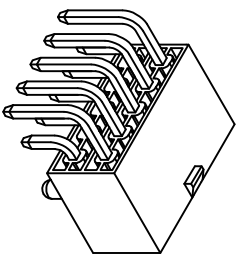
XYDZ® 东莞市祥运连接器有限公司
Dongguan XiangYun Connectors CO., Ltd

投影法: 单位: MM
比例/Scale: 1:1
页码/SHEET: 1/1
版本/Rev: D

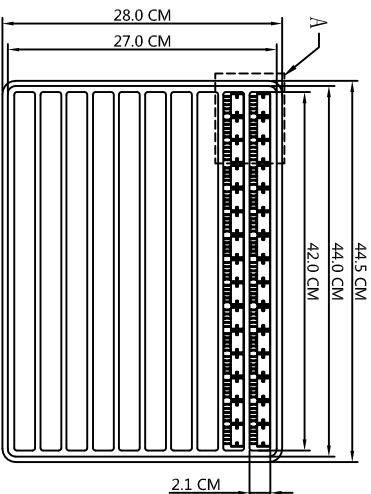
品名 (PART NAME): Molex 4.20mm 90° 定位柱
料号 (PART NO): W4202RD-2xNP-XX
Wafer Connector Series

状态码: C

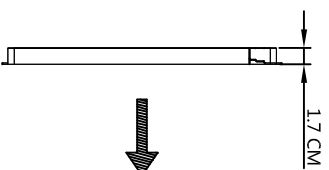
RoHS



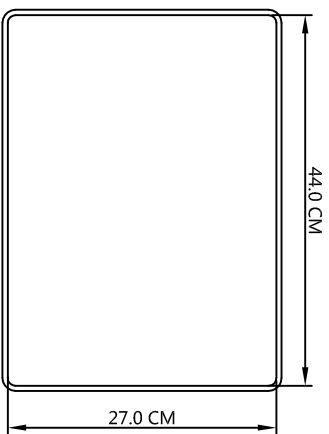
产品



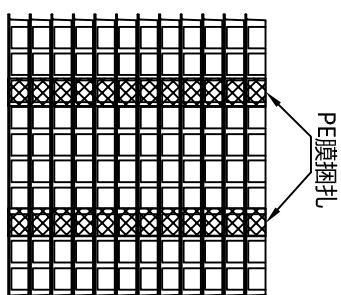
吸塑盘下盖(10格)



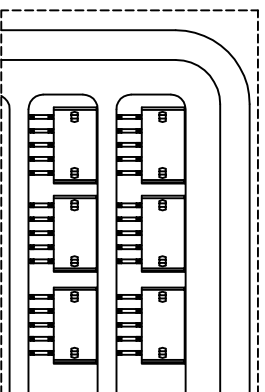
吸塑盘上盖



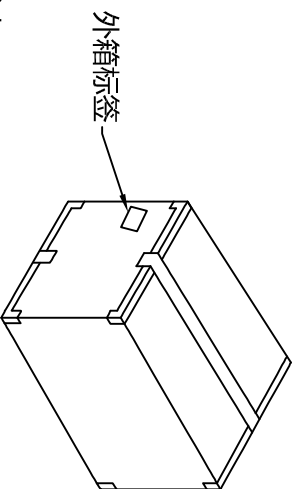
最上层盖—上盖



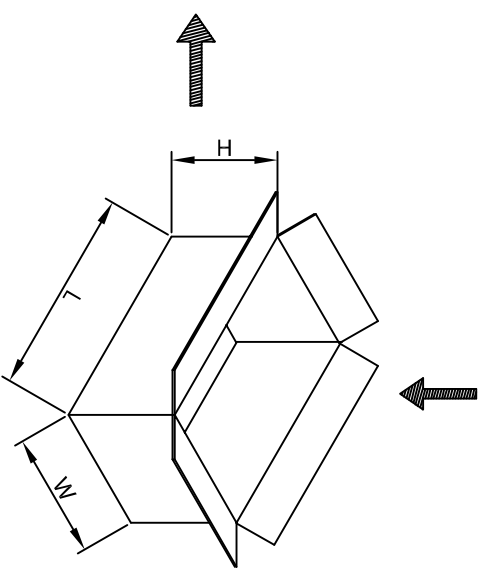
PIN/位	PCS/盘	层/箱	PCS/箱
2x1P	730	17	12410
2x2P	410	17	6970
2x3P	290	17	4930
2x4P	220	17	3740
2x5P	180	17	3060
2x6P	150	17	2550
2x7P	130	17	2210
2x8P	110	17	1870
2x9P	100	17	1700
2x10P	90	17	1530
2x11P	80	17	1360
2x12P	80	17	1360



局部放大图A



外箱标签



封箱(工字形)

外箱规格:
45.0(L)x29.0(W)x25.0(H)CM

包装说明:
步骤1: 将产品按要求整齐摆放入吸塑盘下盖内。
 在层叠起来,方向需一致。
步骤2: 按一箱层叠17层叠起来,最上层盖—上盖。
 然后用PE膜扎住,为一箱,放入纸箱,封箱,贴外箱标签。
注: 不满一箱时,需以填充物填充,不可有晃动。

G	2x12P	80	17	1360
---	-------	----	----	------

F	2x11P	80	17	1360
---	-------	----	----	------

E	2x10P	90	17	1530
---	-------	----	----	------

D	2x9P	100	17	1700
---	------	-----	----	------

C	2x8P	110	17	1870
---	------	-----	----	------

B	2x7P	130	17	2210
---	------	-----	----	------

A	2x6P	150	17	2550
---	------	-----	----	------

H	2x5P	180	17	3060
---	------	-----	----	------

G	2x4P	220	17	3740
---	------	-----	----	------

F	2x3P	290	17	4930
---	------	-----	----	------

E	2x2P	410	17	6970
---	------	-----	----	------

D	2x1P	730	17	12410
---	------	-----	----	-------

C	产品			
---	----	--	--	--

B				
---	--	--	--	--

A				
---	--	--	--	--

H	版本	说明	日期	承认
---	----	----	----	----

G	Rev.	DESCRIPTION	DATE	APPRO.
---	------	-------------	------	--------

1	1	2	3	4	5	6	7	8	9	10
---	---	---	---	---	---	---	---	---	---	----

一般公差	0±0.50
GENERAL TOLERANCE:	.00±0.40
	.000±0.30
ANGLE: ±1°	

绘图/DR

PR. Duca

审核/CHECK

陈雄军

批准/APPRO

胡进

日期/DATE

2019-06-15

承认

APPRO.

XYDZ® 东莞市祥运连接器有限公司
 Dongguan XiangYun Connector s CO., Ltd

投影法
 Projection
 单位 Unit
 MM
 比例/Scale
 1:1
 大小/Size
 A4
 页码/SHEET
 1/1
 版本/Rev
 A

品名
 (PART NAME)
 Molex4.20mm 2xNP 90° 定位柱
 Packaging Specification

料号
 (PART NO)
 W4202RD-2xNP
 状态码
 C