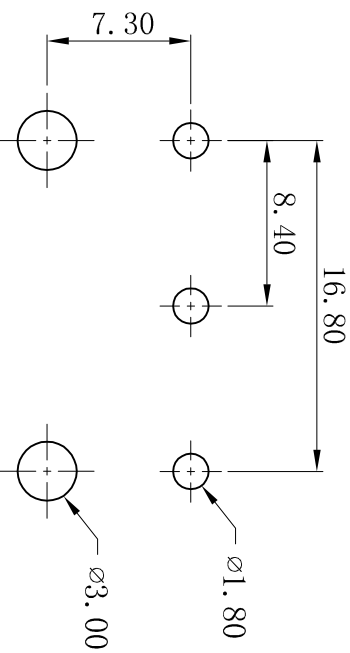
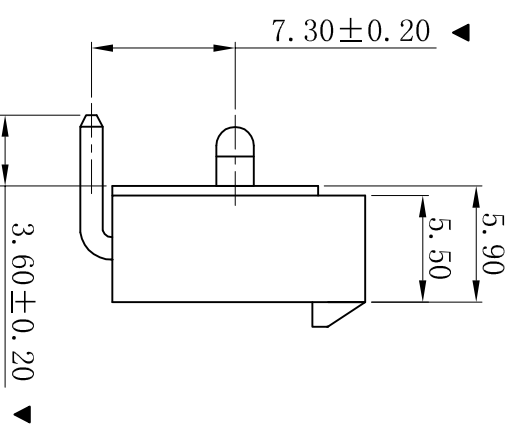
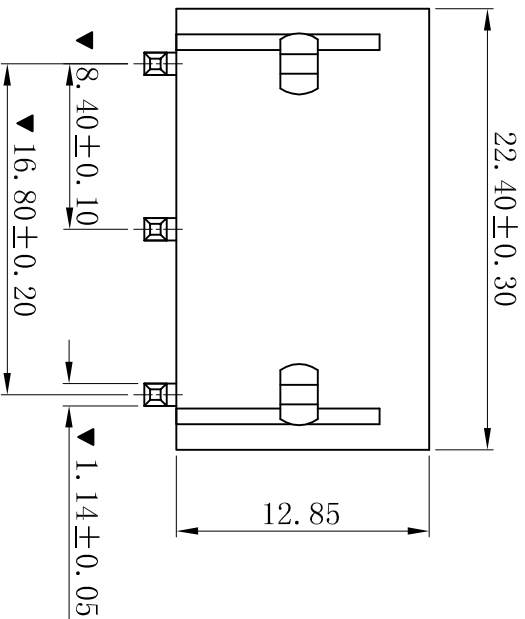
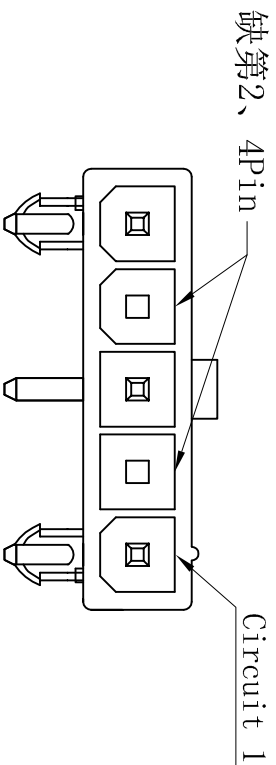


RoHS



P.C.B LAYOUT

- SPECIFICATIONS**
- Voltage rating: 600V AC, DC
 - Current rating: 7A, AC, DC
 - Withstanding Voltage: 1500V AC/minute
 - Insulation resistance: 1000MΩ min
 - Temperature range: -25° C ~ +85° C
 - Contact resistance: 20mΩ max
- WAFER**
- Part No.: W4202RD-1x05P-G-Q2P
 - Poles: 05P
 - Housing Material: PA66 UL94V-2
 - Pin Material: Brass
 - Contact Area Plating: Gold-Flash
 - Mates With: H4201 Single row receptacle
 - The Dimension Marked “▼” Must Be Recorded

更新图面		2019-07-03		陈雄军		一般公差 GENERAL TOLERANCE:		0±0.30 .0±0.25 .00±0.20 .000±0.05		XYDZ® 东莞市祥运连接器有限公司 Dongguan XiangYun Connectors CO., Ltd	
修訂版本		2015-11-04		陈雄军		绘图/DR		陈雄军		品名 (PART NAME)	
变更图宽格式内容		2013-12-27		陈雄军		审核/CHECK		陈雄军		Molex4.20mm 90° 定位柱 Wafer Connector Series	
新版本		2011-05-24		陈雄军		核准/APPRO		胡进		料号 (PART NO)	
说明		2011-05-24		陈雄军		日期/DATE		2019-07-03		W4202RD-1x05P-G-Q2P	
版次		DESCRPTION		APPRO.		日期/DATE		2019-07-03		状态码	
REV.		1		2		3		4		5	