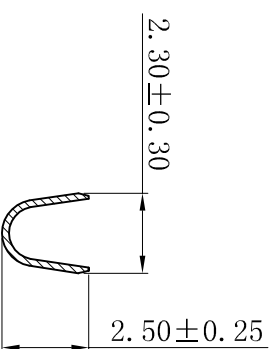
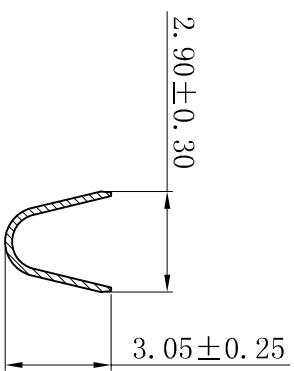
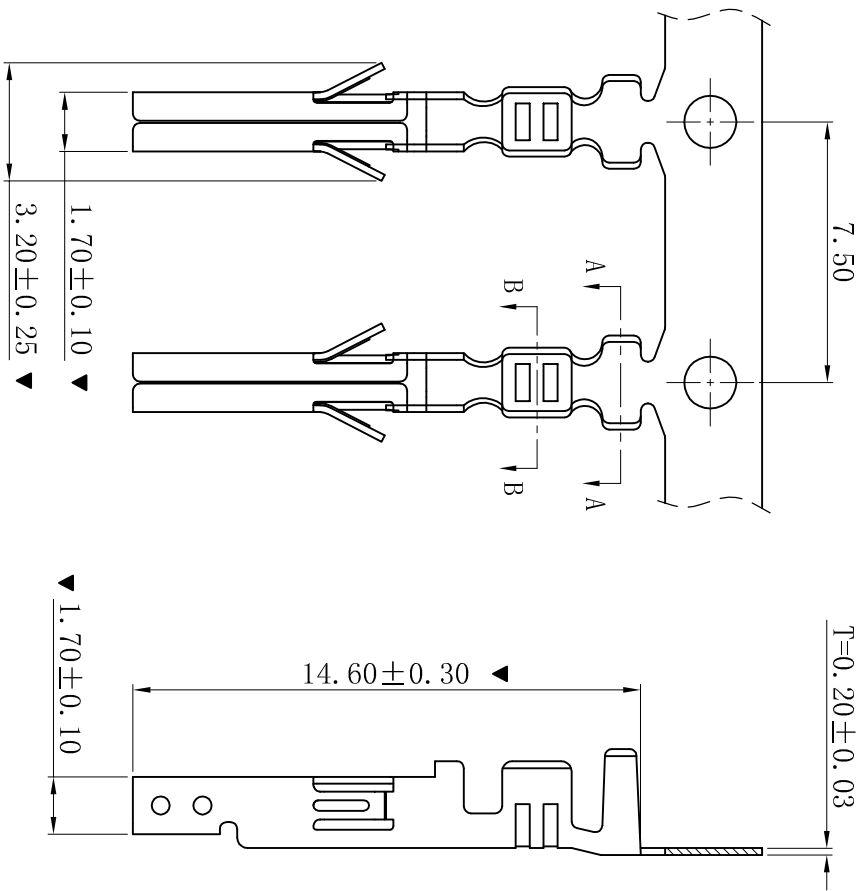


RoHS

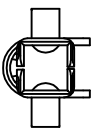


■ SPECIFICATIONS

- Voltage rating: 600V AC, DC
- Current rating: 7A, AC, DC
- Withstanding Voltage: 1500V AC/minute
- Temperature range: -25° C~+85° C
- Contact resistance: 20mΩ max

■ TERMINAL

- Part No.: T4202LBT
- Applicable wire: AWG#18-#22
- Material: Brass
- Finish: Tin-Plated
- The Dimension Marked “▼” Must Be Recorded



D	更新图面	2019-07-03	陈雄军
C	修订版本	2018-07-09	陈雄军
B	变更图宽格式内容	2013-12-27	陈雄军
A	新版本	2011-05-24	陈雄军
版次	说明	日期	承认
REV.	DESCRIPTION	DATE	APPRO.

一般公差	0±0.30
GENERAL TOLERANCE:	.00±0.25
	.000±0.05
ANGLE: ±1°	
绘图/DR	陈雄军
审核/CHECK	胡进
批准/APPRO	胡进
日期/DATE	2019-07-03

<p>XYDZ® 东莞市祥运连接器有限公司</p> <p>Dongguan Xiangyun Connector s CO., Ltd</p>	
投影法 Projection	品名 (PART NAME)
单位 Unit	料号 (PART NO)
比例/Scale	Terminal Connector Series
大小/Size	Molex 4.20mm 喇叭口 Female
页码/Sheet	
版本/Rev	
D	C