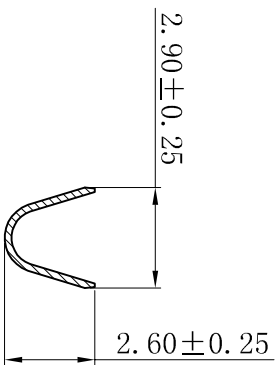
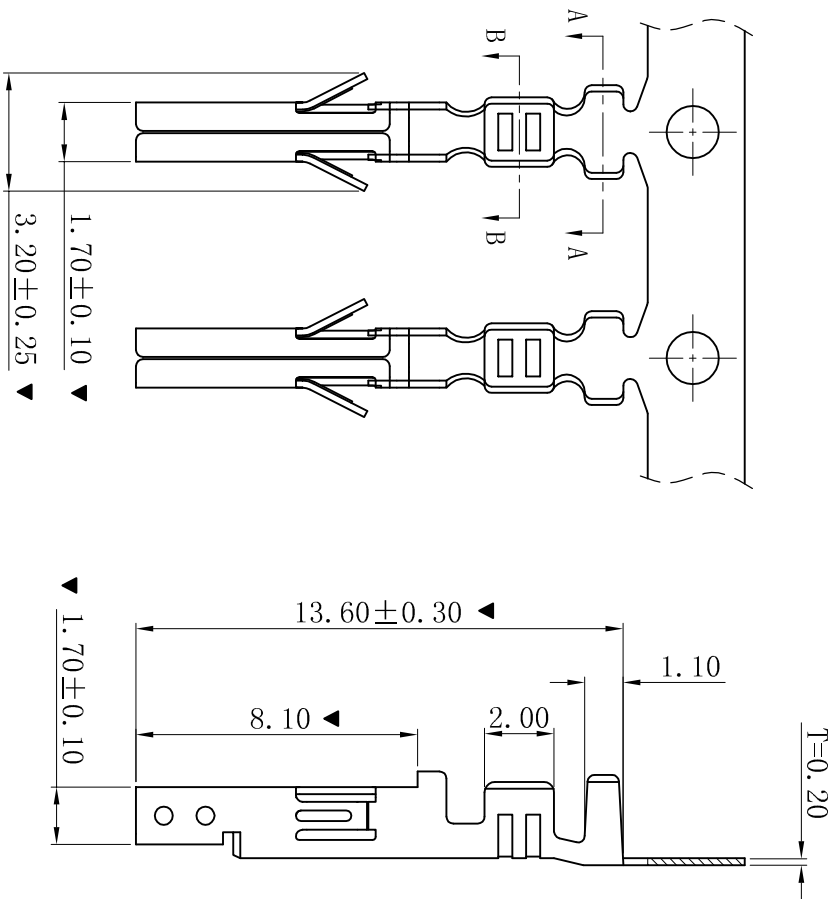
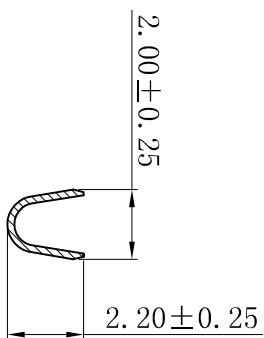


RoHS



SECTION: A-A



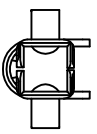
SECTION: B-B

■ SPECIFICATIONS

- Voltage rating: 600V AC, DC
- Current rating: 7A, AC, DC
- Withstanding Voltage: 1500V AC/minute
- Temperature range: -25°C~+85°C
- Contact resistance: 20mΩ max

■ TERMINAL

- Part No.: T4202BT-Z
- Applicable wire: AWG#20-#24
- Material: Brass
- Finish: Tin-Plated
- The Dimension Marked “▼” Must Be Recorded



D	更新图面	2019-07-03	陈雄军
C	修订版本	2018-07-09	陈雄军
B	变更图宽格式内容	2013-12-27	陈雄军
A	新版本	2011-05-24	陈雄军
H	说明	日期	承认
1	版次	REV.	APPRO.

一般公差	0±0.30
GENERAL TOLERANCE:	.00±0.25
	.000±0.05
ANGLE: ±1°	
绘图/DR	陈雄军
审核/CHECK	陈雄军
批准/APPRO	胡进
日期/DATE	2019-07-03

<p>XYDZ® 东莞市祥运连接器有限公司 Dongguan Xiangyun Connector s CO., Ltd</p>	
投影法 Projection	品名 (PART NAME)
单位 Unit	Molex 4, 20mm Female
比例/Scale	Terminal Connector Series
大小/Size	
页码/Sheet	料号 (PART NO)
版本/Rev	T4202BT-Z
	状态码
	C