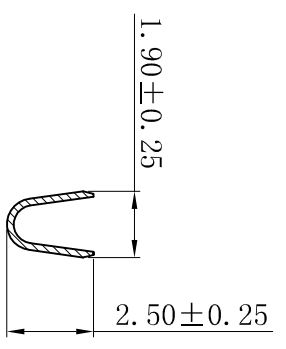
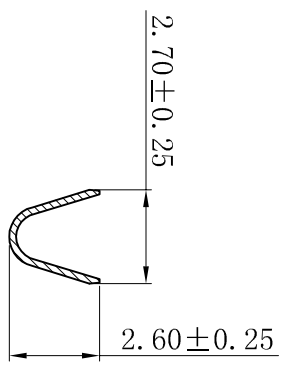
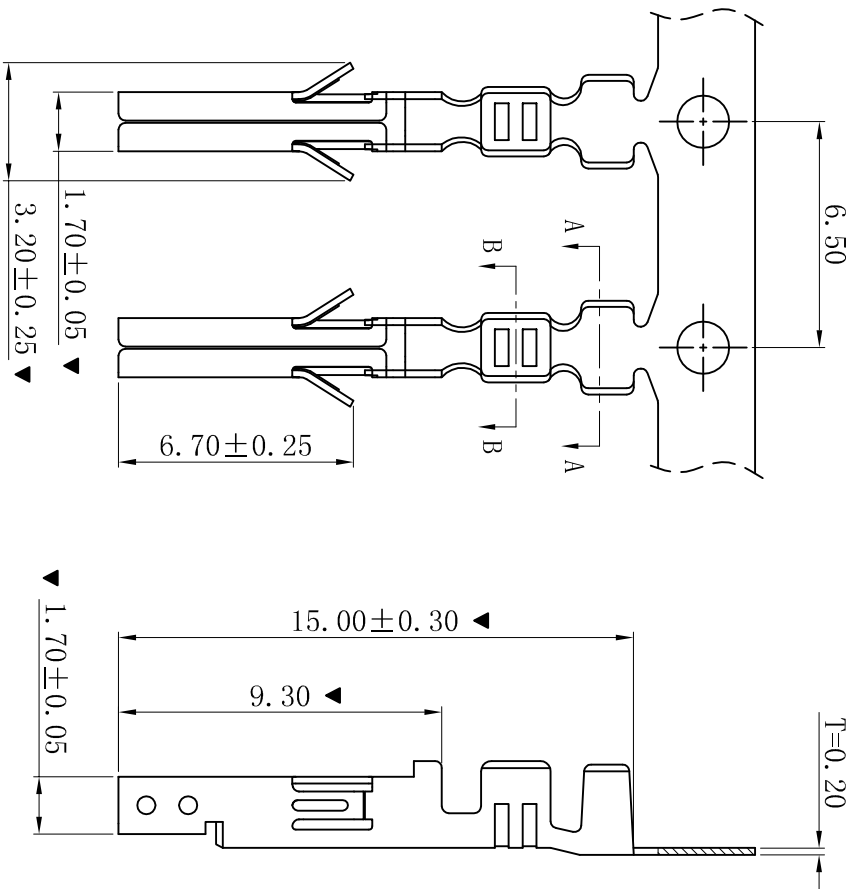
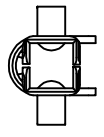


ROHS



- SPECIFICATIONS
- Voltage rating: 600V AC, DC
- Current rating: 7A, AC, DC
- Withstanding Voltage: 1500V AC/minute
- Temperature range: -25° C~+85° C
- Contact resistance: 20mΩ max
- TERMINAL
- Part No.: T4202BT-D
- Applicable wire: AWG#18-#22
- Material: Brass or Phosphor Bronze
- Finish: Tin-Plated
- The Dimension Marked “▲” Must Be Recorded



D	更新图面	2019-07-03	陈雄军
C	修订版本	2018-07-09	陈雄军
B	变更图宽格式内容	2013-12-27	陈雄军
A	新版本	2011-05-24	陈雄军
H	说明	日期	承认
1	版次	REV.	APPRO.

一般公差	0±0.30
GENERAL TOLERANCE:	.00±0.25
	.000±0.20
	.000±0.05
ANGLE: ±1°	
绘图/DR	陈雄军
审核/CHECK	陈雄军
批准/APPRO	胡进
日期/DATE	2019-07-03

XYDZ® 东莞市祥运连接器有限公司
 Dongguan Xiangyun Connector s CO., Ltd

投影法 Projection	品名 (PART NAME)	Molex 4, 20mm Female
单位 Unit	料号 (PART NO)	T4202BT-D
比例/Scale	状态码	C
大小/Size		
页码/SHEET		
版本/Rev		