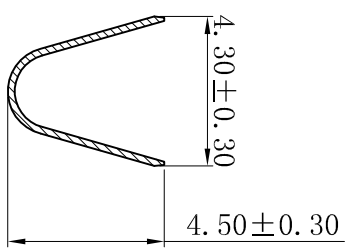
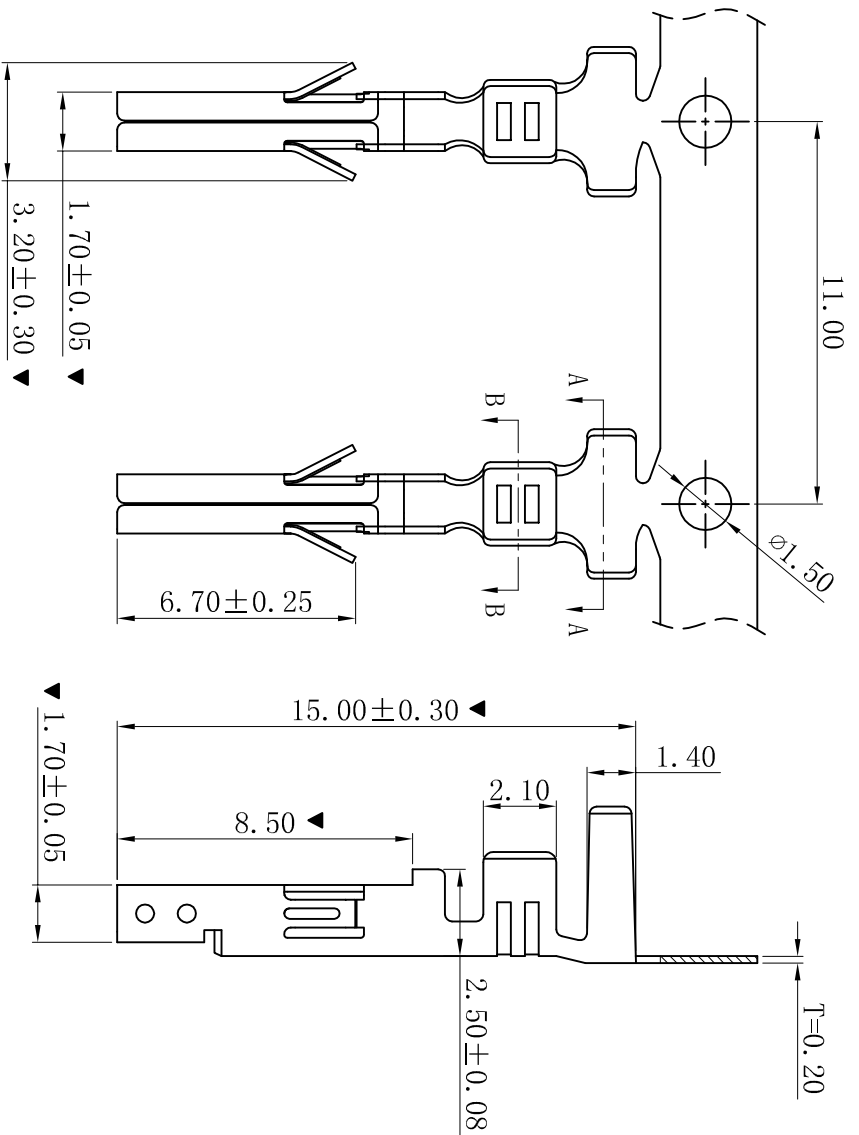
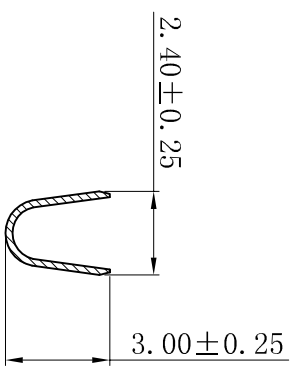


ROHS



SECTION: A-A



SECTION: B-B

- SPECIFICATIONS
- Voltage rating: 600V AC, DC
- Current rating: 7A, AC, DC
- Withstanding Voltage: 1500V AC/minute
- Temperature range: -25° C~+85° C
- Contact resistance: 20mΩ max
- TERMINAL
- Part No.: T4202BT-CGJ-D
- Applicable wire: AWG#16-#18
- Material: Brass or Phosphor Bronze
- Finish: Tin Plated
- The Dimension Marked “▼” Must Be Recorded

更新图面		2019-07-03	陈雄军	一般公差 GENERAL TOLERANCE:		0±0.30 .0±0.25 .00±0.20 .000±0.05	投影法 Projection		品名 (PART NAME)		料号 (PART NO)	状态码
修订版本		2018-07-09	陈雄军	绘图/DR		ANGLE: ±1°	Connector's		Molex4.20mm Female Terminal Connector Series			
变更图宽格式内容		2013-12-27	陈雄军	审核/CHECK			单位 Unit		(PART NAME)			
新版本		2011-05-24	陈雄军	核准/APPRO			比例/Scale		(PART NAME)			
说明		日期	承认	日期/DATE			大小/SIZE		(PART NAME)			
DESCRPTION		DATE	APPRO	日期/DATE			页码/SHEET		(PART NAME)			
1		2	3	4		5	6		7		8	9
1		2	3	4		5	6		7		8	9

XYDZ® 东莞市祥运连接器有限公司
Dongguan Xiangyun Connector s CO., Ltd

Molex4.20mm Female Terminal
Connector Series
T4202BT-CGJ-D
C