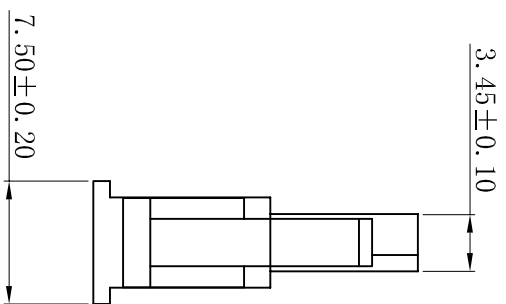
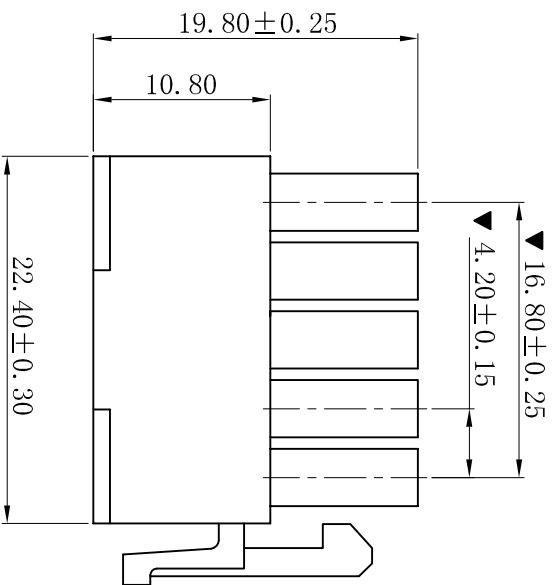
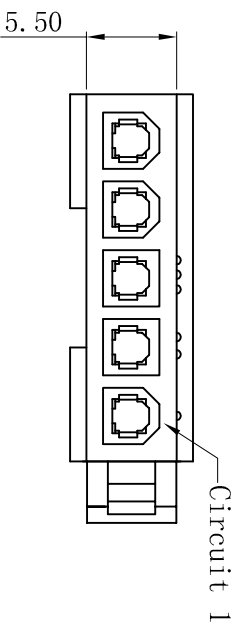


RoHS



■ SPECIFICATIONS

- Voltage rating: 600V AC, DC
- Current rating: 7A, AC, DC
- Withstanding Voltage: 1500V AC/minute
- Insulation resistance: 1000MΩ min
- Temperature range: -25° C~+85° C

■ HOUSING

- Part No. : H4201CB-1x05P-BK
- Poles: 05P
- Housing Material: PA66 UL94V-2 Black
- Mates With: H4202 dual row receptacle
- Use With: T4202 Terminal
- The Dimension Marked “▼” Must Be Recorded

A		1		2		3		4		5		6		7		8		9		10	
G																					
H		B		更新图面		2019-07-03		PP, Duaw		一般公差 GENERAL TOLERANCE:		0±0.30 .0±0.25 .00±0.20 .000±0.05		绘图/DR		PP, Duaw		投影法 Projection		品名 (PART NAME)	
H		A		新版本		2019-04-23		PP, Duaw		ANGLE: ±1°		审核/CHECK		陈雄军		比例/Scale		1:1		料号 (PART NO)	
H		1		说明 DESCRIPTION		日期 DATE:		承认 APPRO.		日期/DATE		胡进		大小/Size		A4		页码/SHEET		H4201CB-1x05P-BK	
H		1								日期/DATE		2019-07-03		版本/Rev		B				状态码 C	
<p>XYDZ® 东莞市祥运连接器有限公司 Dongguan XiangYun Connectors CO., Ltd</p> <p>Connectors Molex 4.20mm 侧边卡扣 Male Housing Connector Series</p>																					