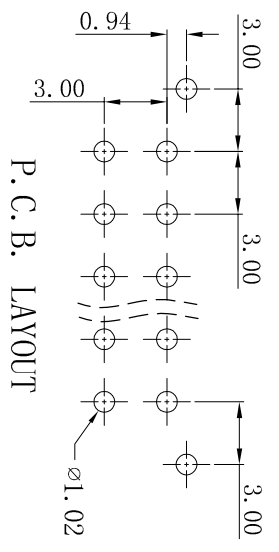
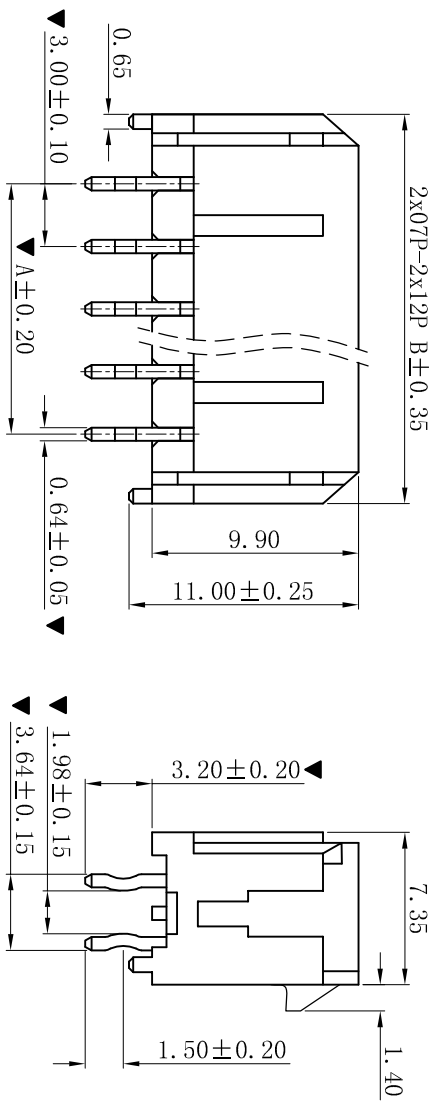


2x01P-2x06P B±0.25
2x07P-2x12P B±0.35



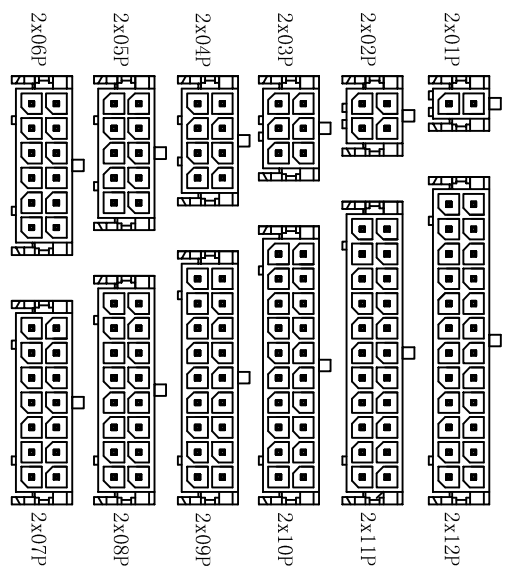
P. C. B. LAYOUT

■ SPECIFICATIONS

- Voltage rating: 250V AC, DC
- Current rating: 5A, AC, DC
- Withstanding Voltage: 1500V AC/minute
- Insulation resistance: 1000MΩ min
- Temperature range: -25° C~+85° C
- Contact resistance: 20mΩ max

■ WAFER

- Part No. : W3045V-2xNP
- Poles : 02-24P
- Housing Material : PA66 15%GF UL94V-0 Black
- Pin Material : Brass
- Contact Area Plating : Tin-Plated
- The Dimension Marked “▼” Must Be Recorded



CIRCUIT SIZE LAYOUT

Poles	Dimensions (mm)	
	A	B
02	---	6.65
04	3.00	9.65
06	6.00	12.65
08	9.00	15.65
10	12.00	18.65
12	15.00	21.65
14	18.00	24.65
16	21.00	27.65
18	24.00	30.65
20	27.00	33.65
22	30.00	36.65
24	33.00	39.65

XYDZ® 东莞市祥运连接器有限公司
Dongguan XiangYun Connectors CO., Ltd

一般公差 GENERAL TOLERANCE:	0±0.30 .0±0.25 .00±0.20 .000±0.05
绘图/DR	P. C. Chau
审核/CHECK	陈雄军
批准/APPRO	胡进
日期/DATE	2019-06-03

更新图面	2019-06-03	P. C. Chau
修订版本	2015-11-04	陈雄军
变更图宽格式内容	2013-12-27	陈雄军
新版本	2011-05-24	陈雄军

说明 DESCRIPTION	日期 DATE	承认 APPRO.
版次 REV.	1	

投影法 Projection: MM
单位 Unit: MM
比例/Scale: 1:1
大小/Size: A4
页码/Sheet: 1/1
版本/New: D

品名 (PART NAME): Molex 3.0mm 180° Wafer
连接器系列 Connector Series

料号 (PART NO): W3045V-2xNP
状态码: C