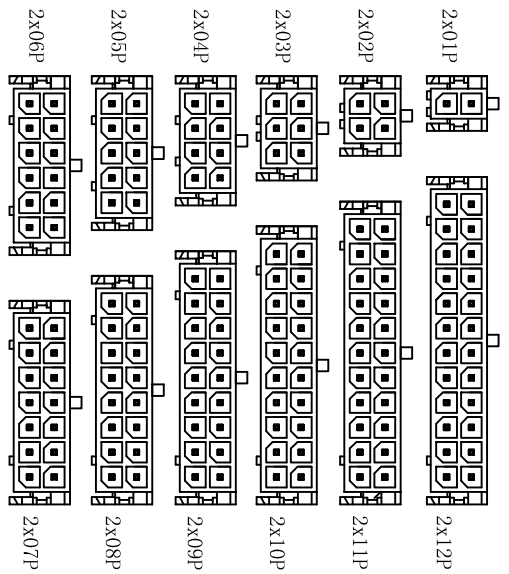
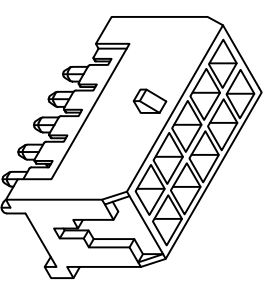
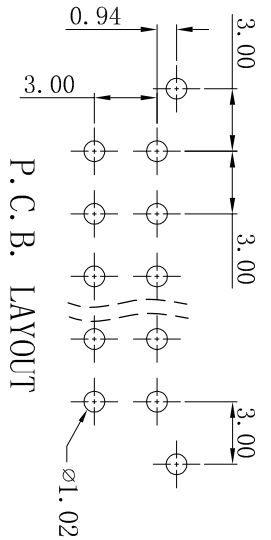
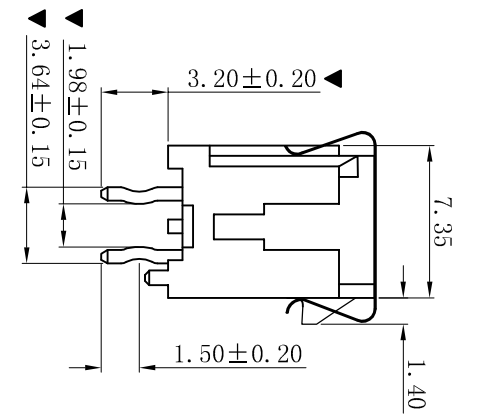
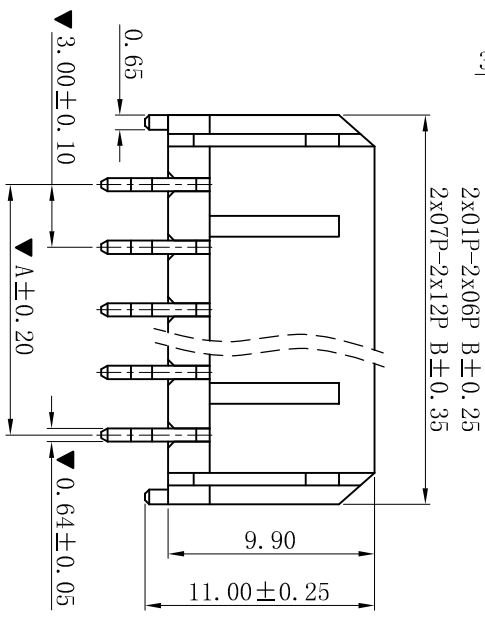
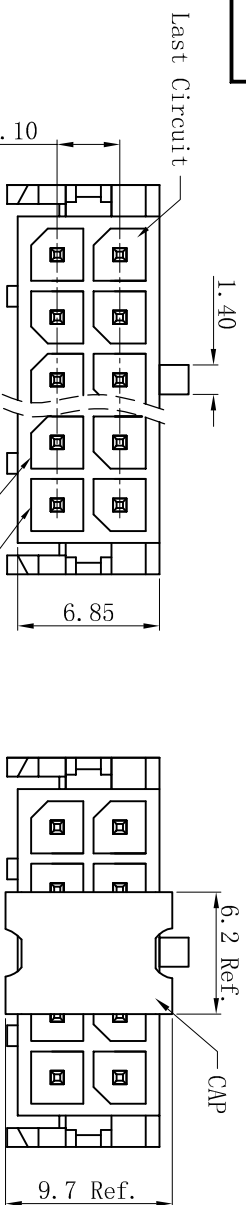


RoHS



Poles	Dimensions (mm)	
	A	B
02	---	6.65
04	3.00	9.65
06	6.00	12.65
08	9.00	15.65
10	12.00	18.65
12	15.00	21.65
14	18.00	24.65
16	21.00	27.65
18	24.00	30.65
20	27.00	33.65
22	30.00	36.65
24	33.00	39.65

- ### ■ SPECIFICATIONS
- Voltage rating: 250V AC, DC
 - Current rating: 5A, AC, DC
 - Withstanding Voltage: 1500V AC/minute
 - Insulation resistance: 1000M Ω min
 - Temperature range: -25 $^{\circ}$ C~+85 $^{\circ}$ C
 - Contact resistance: 20m Ω max
- ### ■ WAFER
- Part No.: W3045V-2xNP-CAP
 - Poles : 02-24P
 - Housing Material: PA66 15%GF UL94V-0 Black
 - Pin Material: Brass
 - Contact Area Plating: Tin-Plated
 - The Dimension Marked “▲” Must Be Recorded

更新图面		2019-06-03		陈雄军		一般公差		0±0.30		投影法		品名		Molex 3.0mm 180° Wafer	
修订版本		2015-11-04		陈雄军		GENERAL TOLERANCE:		.00±0.25		第一角		(PART NAME)		Connector Series	
变更图览格式内容		2013-12-27		陈雄军		ANGLE: ±1°		.000±0.05		第二角		料号		W3045V-2xNP-CAP	
新版本		2011-05-24		陈雄军						第三角		状态码		C	
说明		日期		APPRO.		日期/DATE		2019-06-03		版本/Rev					
DESCRPTION		DATE		APPRO.		日期/DATE		2019-06-03		版本/Rev					
1		2		3		4		5		6		7		8	
1		2		3		4		5		6		7		8	

XYDZ® 东莞市祥运连接器有限公司
 Dongguan XiangYun Connectors CO., Ltd