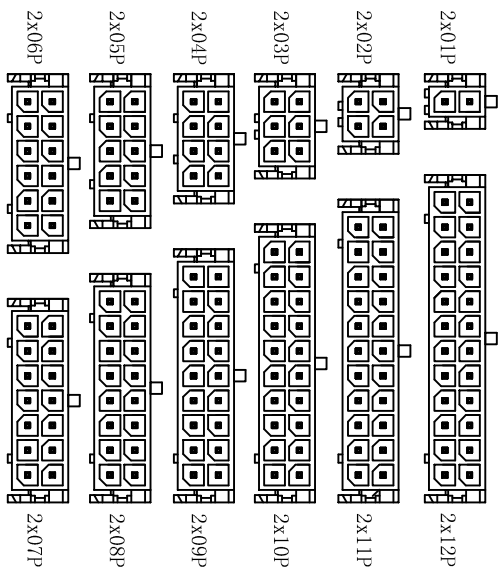
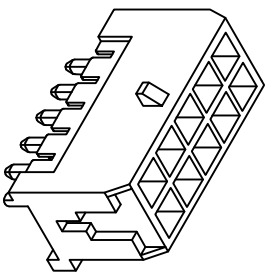
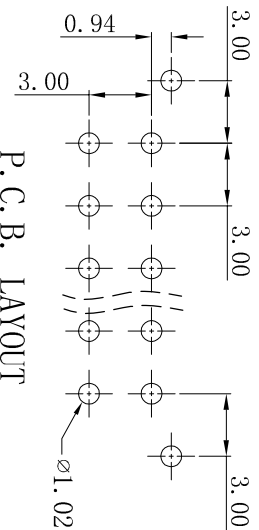
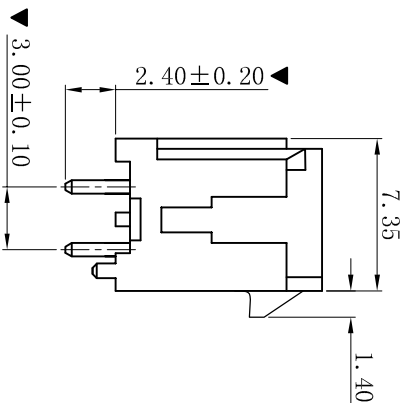
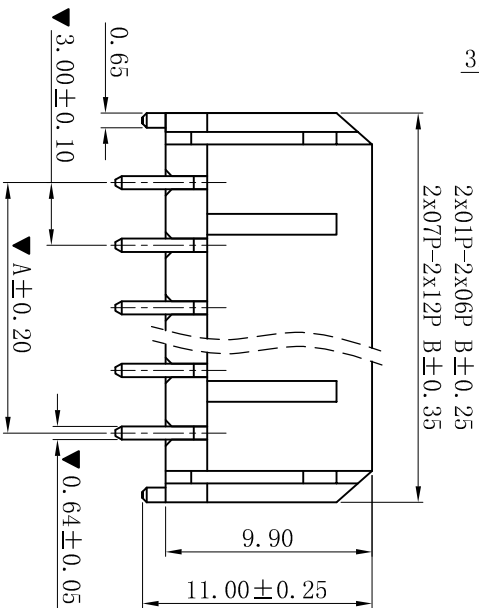
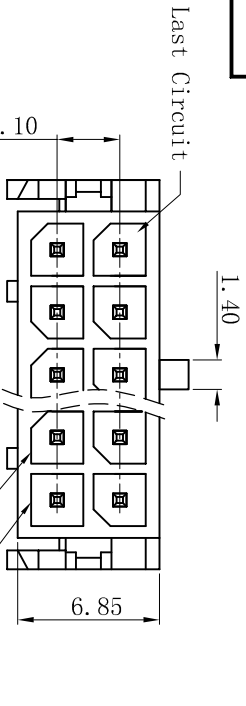


RoHS



Poles	Dimensions (mm)	
	A	B
02	---	6.65
04	3.00	9.65
06	6.00	12.65
08	9.00	15.65
10	12.00	18.65
12	15.00	21.65
14	18.00	24.65
16	21.00	27.65
18	24.00	30.65
20	27.00	33.65
22	30.00	36.65
24	33.00	39.65

SPECIFICATIONS

- Voltage rating: 250V AC, DC
- Current rating: 5A, AC, DC
- Withstanding Voltage: 1500V AC/minute
- Insulation resistance: 1000MΩ min
- Temperature range: -40°C~+105°C
- Contact resistance: 20mΩ max

WAFER

- Part No. : W3045V-2xNP-B-LPBK-WL2.4-H
- Poles : 02-24P
- Housing Material: LCP UL94V-0 Black
- Pin Material: High Conductivity Copper
- Contact Area Plating: Tin-Plated
- The Dimension Marked "▼" Must Be Recorded

P.C.B. LAYOUT

CIRCUIT SIZE LAYOUT

D	更新图画	2019-06-03	陈雄军	承认	2019-06-03
C	修订版本	2015-11-04	陈雄军	承认	2019-06-03
B	变更图宽格式内容	2013-12-27	陈雄军	承认	2019-06-03
A	新版本	2011-05-24	陈雄军	承认	2019-06-03
H	版次	说明	日期	承认	日期
1	REV.	DESCRIPTION	DATE	APPRO.	DATE

一般公差		0±0.30
GENERAL TOLERANCE:		.00±0.25
		.000±0.05
ANGLE: ±1°		
绘图/DR	陈雄军	胡进
审核/CHECK	陈雄军	胡进
批准/APPRO	陈雄军	胡进
日期/DATE	2019-06-03	

XYDZ® 东莞市祥运连接器有限公司 Dongguan XiangYun Connectors CO., Ltd		品名 (PART NAME) Molex 3.0mm 180° Wafer Connector Series	
投影法 Projection	MM	料号 (PART NO)	W3045V-2xNP-B-LPBK-WL2.4-H
单位 Unit	1:1	状态码	C
比例/Scale	A4		
页码/SHEET	1/1		
版本/Rev	D		