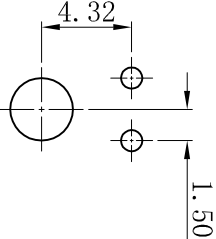
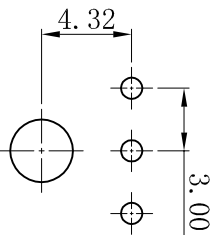
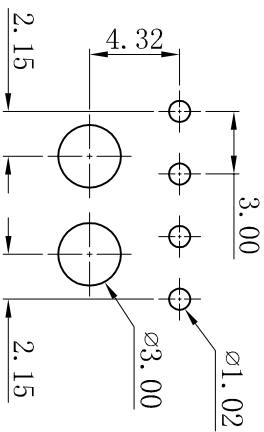
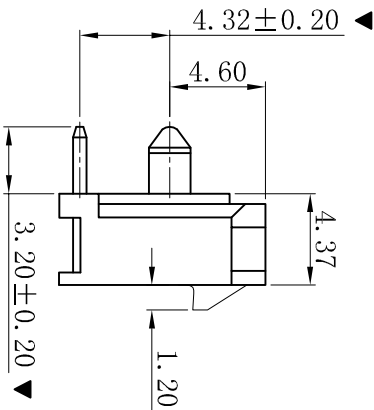
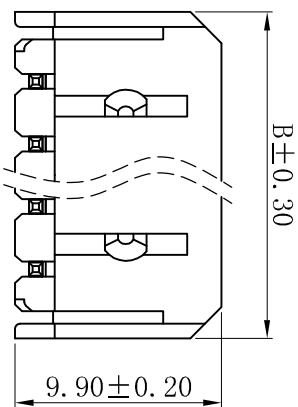
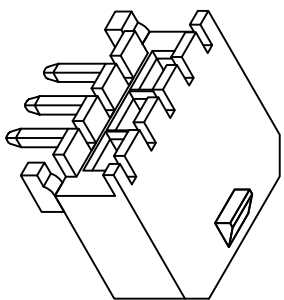
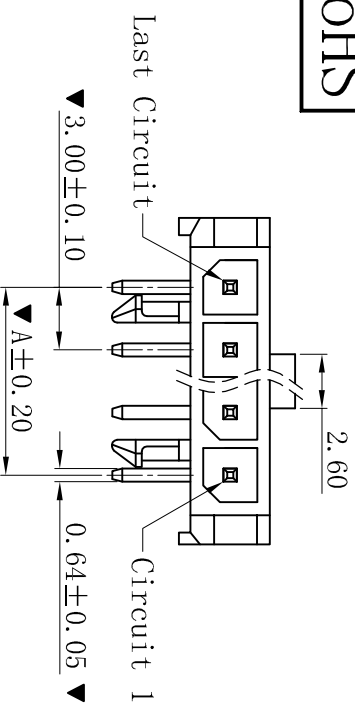


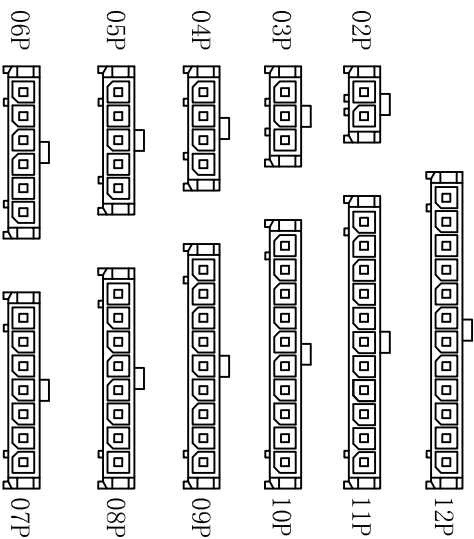
ROHS



P. C. B. LAYOUT 04P-12P

PCB. LAYOUT: 03P

PCB. LAYOUT: 02P



CIRCUIT SIZE LAYOUT

Poles	Dimensions (mm)	
	A	B
02	3.00	9.65
03	6.00	12.65
04	9.00	15.65
05	12.00	18.65
06	15.00	21.65
07	18.00	24.65
08	21.00	27.65
09	24.00	30.65
10	27.00	33.65
11	30.00	36.65
12	33.00	39.65

■ SPECIFICATIONS

- Voltage rating: 250V AC, DC
- Current rating: 5A, AC, DC
- Withstanding Voltage: 1500V AC/minute
- Insulation resistance: 1000MΩ min
- Temperature range: -40° C~+105° C
- Contact resistance: 20mΩ max

■ WAFER

- Part No.: W3045R-1xNP-LPBK
- Poles : 02-12P
- Housing Material: LCP UL94V-0 Black
- Pin Material: Brass
- Contact Area Plating: Tin-Plated
- Temperature tolerance: 260±5° C
- The Dimension Marked “▼” Must Be Recorded

更新图面		2019-05-27		陈雄军		一般公差 GENERAL TOLERANCE:		0±0.30 .0±0.25 .00±0.20 .000±0.05		投影法 Projection		品名 (PART NAME)		Molex 3.0mm 90° Wafer Connector Series	
修订版本		2015-11-04		陈雄军		ANGLE: ±1°				单位 Unit		料号 (PART NO)		W3045R-1xNP-LPBK	
变更图宽格式内容		2013-12-27		陈雄军						比例/Scale		状态码		C	
新版本		2011-05-24		陈雄军						大小/Size					
说明 DESCRIPTION		日期 DATE		承认 APPRO.		日期/DATE		2019-05-27		页码/Sheet					
版次 REV.		1		2		3		4		5		6		7	
1		2		3		4		5		6		7		8	
9		10		11		12		13		14		15		16	

XYDZ® 东莞市祥运连接器有限公司
Dongguan XiangYun Connectors CO., Ltd