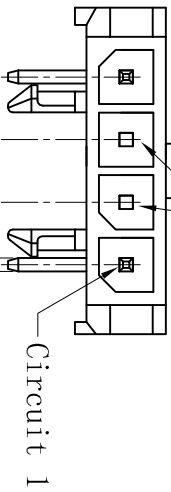


ROHS

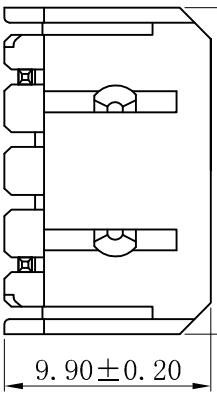
2.60  
缺第2、3PIN



▼ 3.00±0.10  
▼ 9.00±0.20  
▼ 0.64±0.05

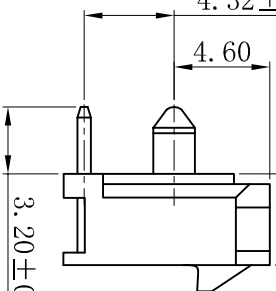
Circuit 1

15.65±0.30

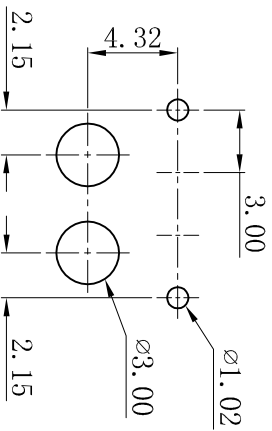


9.90±0.20

▼ 4.32±0.20



▼ 3.20±0.20



3.00

∅1.02

4.32

∅3.00

2.15

2.15

P.C.B. LAYOUT

TOLERANCE: ±0.05mm

■ SPECIFICATIONS

- Voltage rating: 250V AC, DC
- Current rating: 5A, AC, DC
- Withstanding Voltage: 1500V AC/minute
- Insulation resistance: 1000MΩ min
- Temperature range: -25° C~+85° C
- Contact resistance: 20mΩ max

■ WAFER

- Part No.: W3045R-1x04P-Q23P
- Poles : 04P
- Housing Material: PA66 15%GF UL94V-0 Black
- Pin Material: Brass
- Contact Area Plating: Tin-Plated
- The Dimension Marked "▼" Must Be Recorded

更新图面		2019-06-03		P.C.B. LAYOUT		一般公差 GENERAL TOLERANCE:		0±0.30 .0±0.25 .000±0.20 ANGLE: ±1°		投影法 Projection		品名 (PART NAME)		料号 (PART NO)		状态码							
修打版本		2015-11-04		陈雄军		绘图/DR		P.C. Draw		MM		Molex 3.0mm 90° 4P Wafer Connector Series		W3045R-1x04P-Q23P		C							
变更图宽格式内容		2013-12-27		陈雄军		审核/CHECK		陈雄军		1:1													
新版本		2011-05-24		陈雄军		核准/APPRO		胡进		A4													
说明 DESCRIPTION		日期 DATE:		承认 APPRO.		日期/DATE		2019-06-03		页码/SHEET													
版次 REV.		1				2		3		4		5		6		7		8		9		10	

**XYDZ® 东莞市祥运连接器有限公司**  
Dongguan XiangYun Connectors CO., Ltd