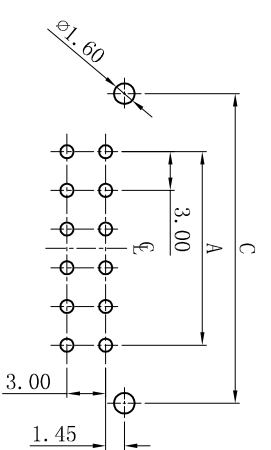
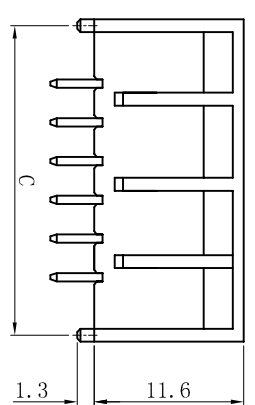
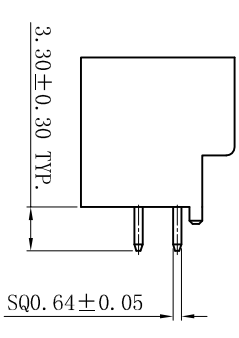
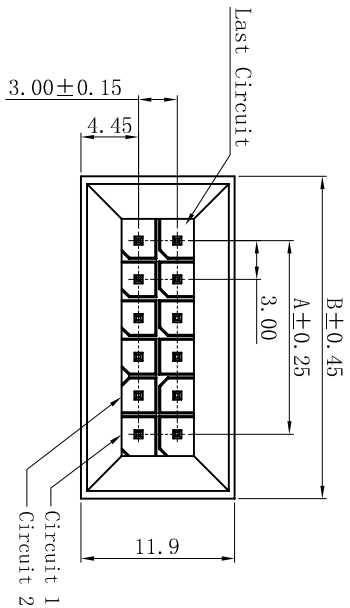
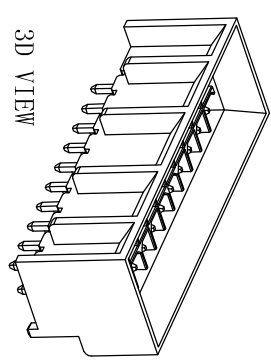


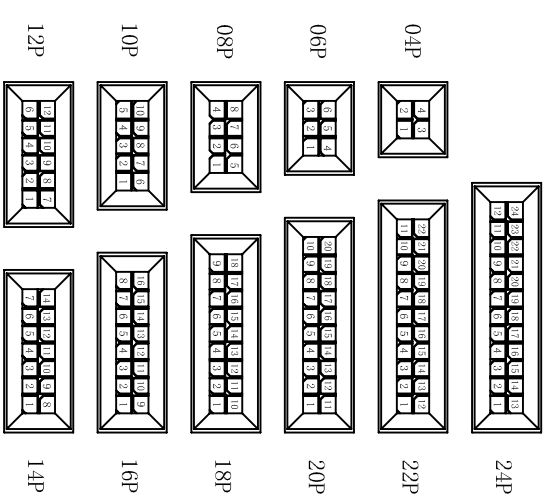
ROHS



P.C.B LAYOUT: TOP VIEW  
TOLERANCE: ±0.05mm



- SPECIFICATIONS**
- Voltage rating: 250V AC, DC
  - Current rating: 5A, AC, DC
  - Withstanding Voltage: 1000V AC/minute
  - Insulation resistance: 1000MΩ min
  - Temperature range: -25° C +85° C
  - Contact resistance: 20mΩ max
- WAFER**
- Part No.: W3045LBKV-2xNP-WK
  - Poles: 04-24P
  - Housing Material: PA9T UL94V-0 Black
  - Pin Material: Brass
  - Contact Area Plating: Tin-Plated
  - The Dimension Marked “▲” Must Be Recorded



PART NO.	Dimensions (mm)		
	A	B	C
04	3.00	13.00	12.00
06	6.00	16.00	15.00
08	9.00	19.00	18.00
10	12.00	22.00	21.00
12	15.00	25.00	24.00
14	18.00	28.00	27.00
16	21.00	31.00	30.00
18	24.00	34.00	33.00
20	27.00	37.00	36.00
22	30.00	40.00	39.00
24	33.00	43.00	42.00

一般公差 GENERAL TOLERANCE:	0±0.30 .00±0.25 .000±0.05
ANGLE: ±1°	

**XYDZ® 东莞市祥运连接器有限公司**  
Dongguan Xiangyun Connectors CO., Ltd

Connectors

投影法  
Projection: MM

单位 Unit: MM

比例/Scale: 1:1

大小/SIZE: A4

页码/SHEET: 1/1

版本/Rev: A

绘图/DR	陈雄军	审核/CHECK	胡进	批准/APPRO	日期/DATE	2019-03-12
承认 APPRO.	日期 DATE	2019-03-12	说明 DESCRIPTION	新版本	版次 REV.	A

品名 (PART NAME)	Molex 3.00mm 180° Wafer
料号 (PART NO)	W3045LBKV-2xNP-WK
连接器系列	Connector Series
状态码	C