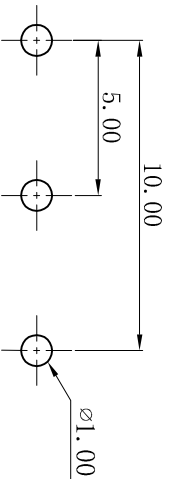
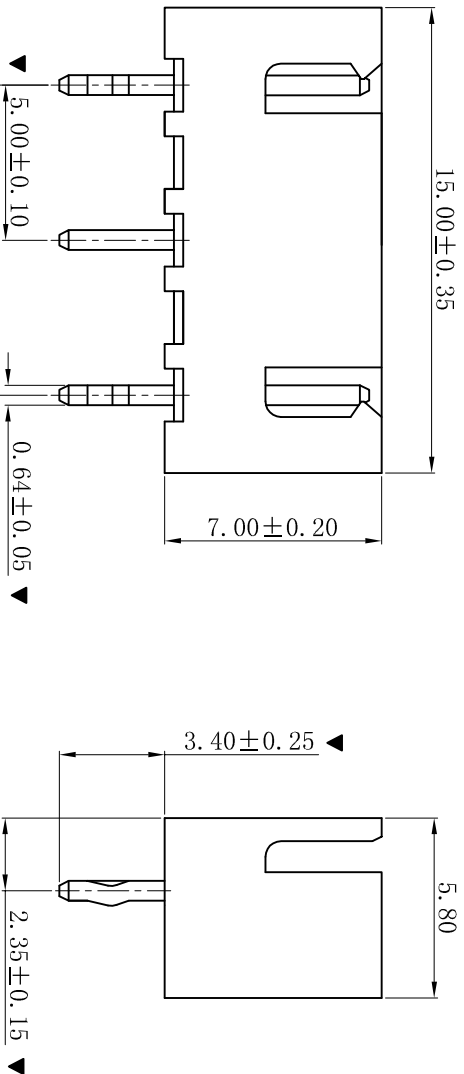
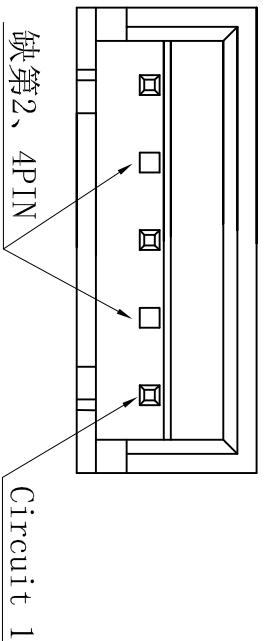


RoHS



P.C.B. LAYOUT

- SPECIFICATIONS**
- Voltage rating: 250V AC, DC
  - Current rating: 3A, AC, DC
  - Withstanding Voltage: 1000V AC/minute
  - Insulation resistance: 1000MΩ min
  - Temperature range: -25° C~+85° C
  - Contact resistance: 20mΩ max
- WAFER**
- Part No.: W2501V-05P-Q2P
  - Housing Material: PA66 UL94V-0
  - Pin Material: Brass
  - Contact Area Plating: Tin-Plated
  - The Dimension Marked “▼” Must Be Recorded

更新图面		2019-06-03		P.C. Draw		一般公差 GENERAL TOLERANCE:		0±0.30 .0±0.25 .00±0.20 .000±0.05		XYDZ® 东莞市祥运连接器有限公司 Connectors Dongguan XiangYun Connectors CO., Ltd		投影法 Projection		品名 (PART NAME)		XH 2.50mm 180° Wafer Connector Series	
修订版本		2015-11-04		陈雄军		绘图/DR		陈雄军		单位 Unit		MM		料号 (PART NO)		W2501V-05P-Q2P	
变更图宽格式内容		2013-12-27		陈雄军		审核/CHECK		陈雄军		比例/Scale		1:1		状态码		C	
新版本		2011-05-24		陈雄军		核准/APPRO		胡进		大小/Size		A4					
说明 DESCRIPTION		日期 DATE		承认 APPRO.		日期/DATE		2019-06-03		页码/SHEET		1/1					
版次 REV.		1				日期/DATE		2019-06-03		版本/Rev		D					