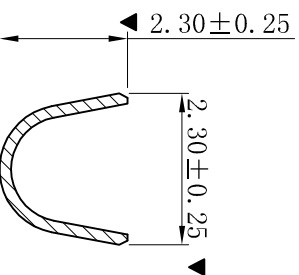
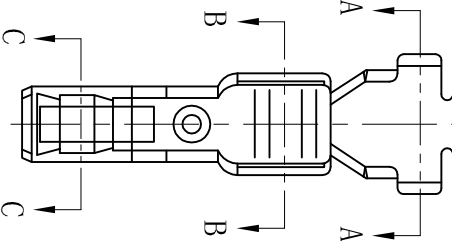
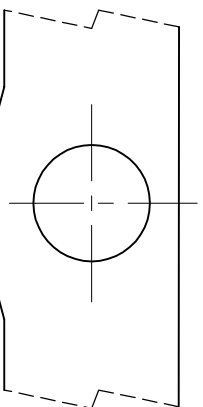
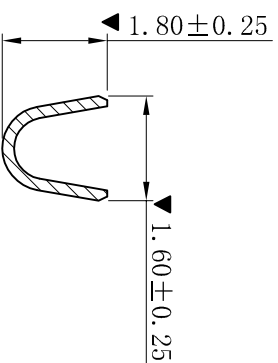
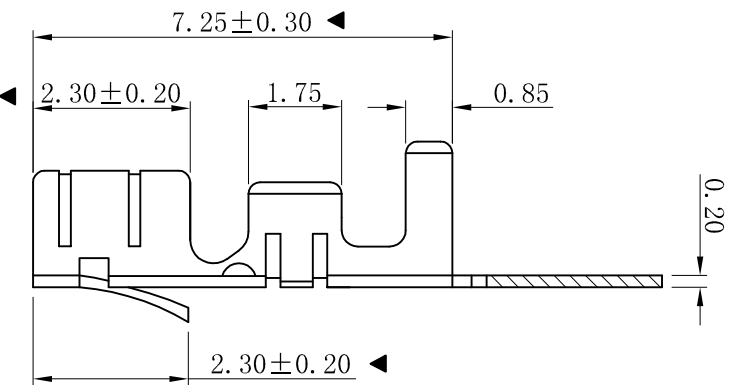


RoHS

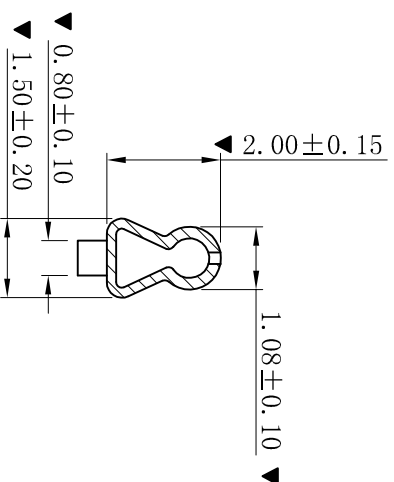


SECTION: A-A



SECTION: B-B

- SPECIFICATIONS
- Voltage rating: 250V AC, DC
 - Current rating: 3A, AC, DC
 - Withstanding Voltage: 1000V AC/minute
 - Temperature range: -25° C~+85° C
 - Contact resistance: 20mΩ max
- TERMINAL
- Part No.: T2505BT
 - Applicable wire: AWG#22-#28
 - Material: Brass
 - Finish: Tin-Plated
 - The Dimension Marked “▼” Must Be Recorded



SECTION: C-C

D	更新图面	2019-06-03	陈雄军	更新图面
C	修订版本	2015-11-04	陈雄军	变更图宽格式内容
B	新版本	2013-12-27	陈雄军	新版本
A	说明	2011-05-24	陈雄军	说明
版次	说明	日期	承认	说明
REV.	DESCRIPTION	DATE	APPRO.	DESCRIPTION

<p>XYDZ® 东莞市祥运连接器有限公司</p> <p>Connectors Dongguan XiangYun Connectors CO., Ltd</p>		<p>投影法</p> <p>单位 Unit</p> <p>比例/Scale</p> <p>大小/Size</p> <p>页码/Sheet</p> <p>版本/Rev</p>	<p>品名</p> <p>(PART NAME)</p> <p>料号</p> <p>(PART NO)</p> <p>状态码</p>
<p>一般公差</p> <p>GENERAL TOLERANCE:</p> <p>0±0.30</p> <p>.0±0.25</p> <p>.00±0.20</p> <p>.000±0.05</p> <p>ANGLE: ±1°</p>	<p>绘图/DR</p> <p>审核/CHECK</p> <p>批准/APPRO</p> <p>日期/DATE</p>	<p>陈雄军</p> <p>陈雄军</p> <p>胡进</p> <p>2019-06-03</p>	<p>Molex 2.50mm Female Terminal</p> <p>Connector Series</p> <p>T2505BT</p> <p>C</p>