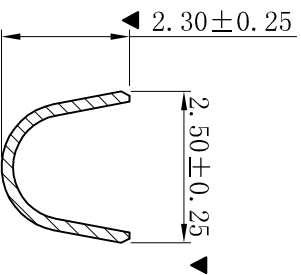
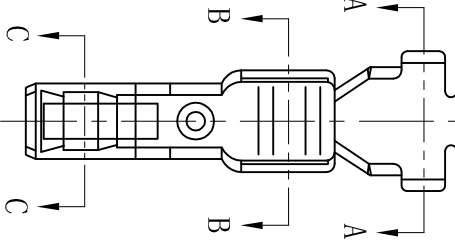
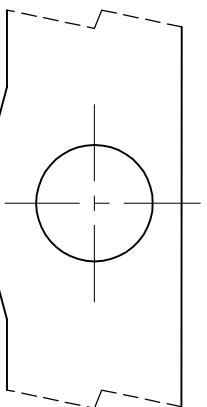
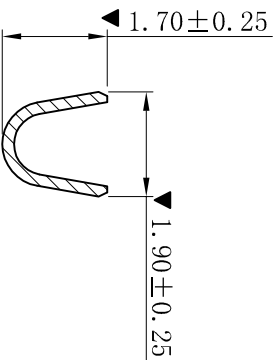
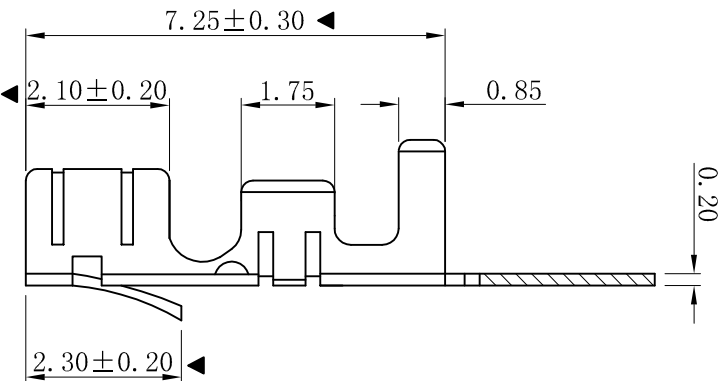


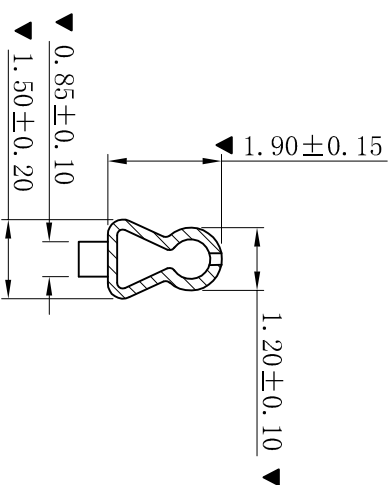
RoHS



SECTION: A-A



SECTION: B-B



SECTION: C-C

■ SPECIFICATIONS

- Voltage rating: 250V AC, DC
- Current rating: 3A, AC, DC
- Withstanding Voltage: 1000V AC/minute
- Temperature range: -25° C~+85° C
- Contact resistance: 20mΩ max

■ TERMINAL

- Part No.: T2505BT-LJ
- Applicable wire: AWG#22-#28
- Material: Brass
- Finish: Tin-Plated
- The Dimension Marked “▼” Must Be Recorded

D	更新图面	2019-06-03	陈雄军
C	修订版本	2015-11-04	陈雄军
B	变更图宽格式内容	2013-12-27	陈雄军
A	新版本	2011-05-24	陈雄军
H	说明		承认
1	版次		
2	REV.		
3	DESCRIPTION		
4	DATE		
5	APPRO.		

一般公差		0±0.30
GENERAL TOLERANCE:		.0±0.25
		.00±0.20
		.000±0.05
ANGLE: ±1°		
绘图/DR	陈雄军	
审核/CHECK	胡进	
批准/APPRO		
日期/DATE	2019-06-03	

<p>XYDZ® 东莞市祥运连接器有限公司 Dongguan XiangYun Connectors CO., Ltd</p>	
投影法 Projection	第一角法 First Angle
单位 Unit	MM
比例/Scale	1:1
大小/Size	A4
页码/Sheet	1/1
版本/Rev	D
品名 (PART NAME)	Molex 2.50mm Female Terminal Connector Series
料号 (PART NO)	T2505BT-LJ
状态码	C