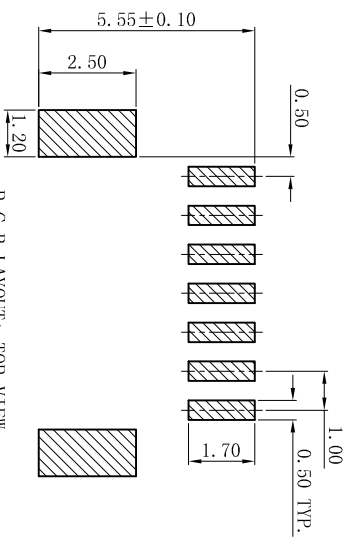
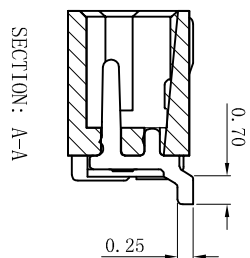
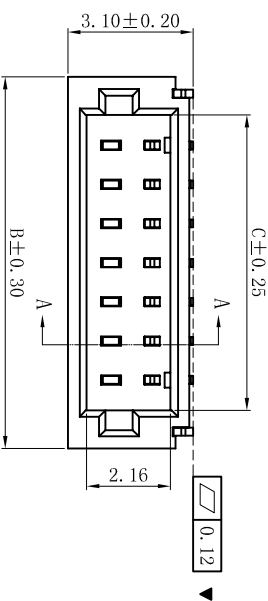
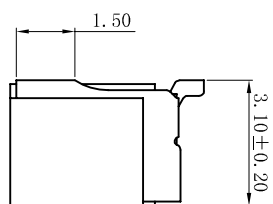
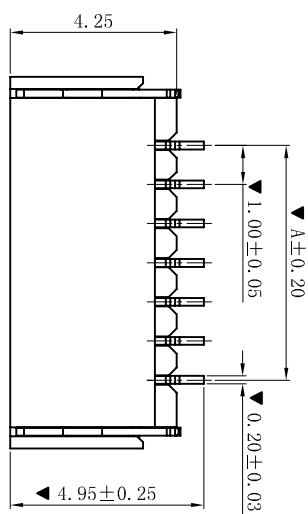


ROHS



P.C.B LAYOUT: TOP VIEW
TOLERANCE: ±0.05mm

- SPECIFICATIONS
- Voltage rating: 50V AC, DC
 - Current rating: 1A, AC, DC
 - Withstanding Voltage: 500V AC/minute
 - Insulation resistance: 100MΩ min
 - Temperature range: -25° C~+85° C
 - Contact resistance: 20mΩ max
- WAFER
- Part No.: W1001SR-NP-XM
 - Poles : 02-20P
 - Housing Material: LCP UL94V-0
 - Pin Material: Phosphor Bronze
 - Contact Area Plating: Tin Plating Fog
 - The Dimension Marked "▲" Must Be Recorded

Poles	Dimensions (mm)		
	A	B	C
02	1.00	4.00	2.55
03	2.00	5.00	3.55
04	3.00	6.00	4.55
05	4.00	7.00	5.55
06	5.00	8.00	6.55
07	6.00	9.00	7.55
08	7.00	10.00	8.55
09	8.00	11.00	9.55
10	9.00	12.00	10.55
11	10.00	13.00	11.55
12	11.00	14.00	12.55
13	12.00	15.00	13.55
14	13.00	16.00	14.55
15	14.00	17.00	15.55
16	15.00	18.00	16.55
17	16.00	19.00	17.55
18	17.00	20.00	18.55
19	18.00	21.00	19.55
20	19.00	22.00	20.55

D	更新图面	2019-06-03	陈雄军	更新图面	2019-06-03	陈雄军	审核/CHK	胡进	日期/DATE	2019-06-03
C	修订版本	2015-11-04	陈雄军	变更图宽格式内容	2013-12-27	陈雄军	审核/CHK	陈雄军	日期/DATE	2011-05-24
B	新版本	2011-05-24	陈雄军	说明		承认	日期/DATE			
A	版次			说明			日期/DATE			
1	版次			说明			日期/DATE			

XYDZ® 东莞市祥运连接器有限公司
Dongguan XiangYun Connectors CO., Ltd

投影法
Connector's

单位 Unit: MM
比例/Scale: 1:1
大小/Size: A4
页码/Sheet: 1/1
版本/Rev: D

品名 (PART NAME): SH1.00mm SMT 90° Wafer Connector Series
料号 (PART NO): W1001SR-NP-XM
状态码: C